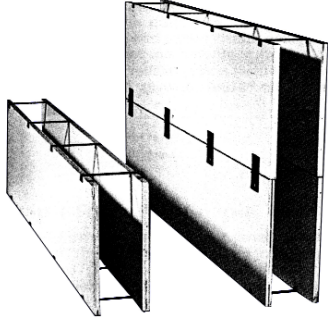


RAP-I-FORM™

# 1 1/8" Walerless Plywood Form System



**Cost Savings:** The RAP-I-FORM system costs a fraction of other concrete forming systems. Plus, you'll also save time on setting and stripping our forms. You'll be using the most cost effective system on the market.

**Versatility:** You can use the RAP-I-FORM system to form anything from slab on-grade foundations to complete basements, and all without purchasing extra hardware.

**Flexibility:** The RAP-I-FORM system can be used with 1 1/8" HDO plywood, 3/4" HDO plywood, or regular dimension lumber. Hardware is readily available for all three types of forming materials. Change your elevations, wall heights and wall thicknesses quickly and easily.

**Simplicity:** You and your crew won't need extensive training to use the RAP-I-FORM system. Most contractors can learn to use the system in less than a day.

**Availability:** The RAP-I-FORM has an extensive dealer network throughout the United States. For a dealer near you, please call one of our offices.

**Accuracy:** The RAP-I-FORM clips and Flat Snaptide Ties are fabricated to exact wall sizes. This ensures you of a consistent wall size throughout the pour.

**Durability:** Most HDO plywood panels, when used with reasonable care, will give you up to 300 pours with the RAP-I-FORM system.



*Metal Products For The Construction Industry*

[www.awardmetals.com](http://www.awardmetals.com)

1000 Whipple Road  
Union City, CA 94587  
(800) 691-9669 Fax (510) 429-9046

4841 Urbani Avenue #400  
McClellan, CA 95652  
(916) 640-1450 Fax (916) 640-1455

50 South 43rd Avenue  
Phoenix, AZ 85009  
(602) 278-2969 Fax (602) 272-2306

12001 East 37th Avenue  
Denver, CO 80239  
(303) 371-8330 Fax (303) 371-8334

2400 N.E. 65th Avenue  
Vancouver, WA 98661  
(360) 694-9530 Fax (360) 694-9630

18770 80th Place South  
Kent, WA 98032  
(425) 291-9501 Fax (425) 291-9502

## Round Snaptide Wedge

Award Rap-I-Form Round Snaptide Wedge is used to take up and secure round snaptides to the panels. The wedge is secured with a vertical hammer blow and is released during stripping with a reverse hammer action.

50 per Box



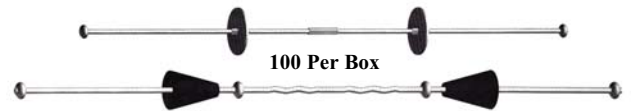
## Flat Snaptide Wedge

Award Rap-I-Form Flat Snaptide Wedge is used to take up and secure flat snaptide ties to the panels. The wedge is secured with a vertical hammer blow and is released during stripping with a reverse hammer action.

50 per Box



## Plastic Cone or Metal Washer Snaptide



100 Per Box

"Short End"

"Stubbie"

3/4" Plywood = 4 3/4" Ends

3/4" Plywood = 1 1/4" Ends

1 1/8" Plywood = 5 1/8" Ends

1 1/8" Plywood = 1 5/8" Ends

"Long End" 3/4" Plywood = 8 1/4" Ends

## Stiffback Tie



Used to stiffen and align the walls by utilizing 2" x 4" vertical stiffbacks where applicable. Used in conjunction with our standard wedges.

## Flat Stacking Tie



The patented flat snaptide provides support through the horizontal joints between the plywood panels. Breakback after stripping is accomplished with a horizontal hammer blow.



## Form Clip - 4" to 24"



Award Rap-I-Form Form Clip is used to spread and hold the top and bottom of form set-up during the pour. The top clips are removed during stripping and saved for the next job. The clips are available in 1" increments from 4" to 24".

## Ready-Vent<sup>®</sup>



8" x 16"  
 Poured-in-place foundation vent, with or without doors.  
 For wall sizes: 6", 8", 10" or 12"  
 Available in Black or Gray

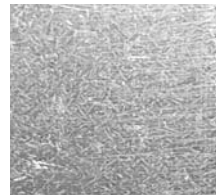
## Metal Key Way



With interlocking stakes. Meets both ACI and PCA recommendations for the design of tongue and groove key joint.

3½", 5½" or 7½"

## Filler Pan



Galvanized filler sheets are used on the interior of walls to compensate for odd wall lengths and eliminate the cutting of panels. The outside panels are allowed to run by at the corners.

## Key Way Stakes

12", 15", 18" & 24"



Sold separately - 100 per box

## Cardboard Pier Pad Boxes



Designed for forming concrete pier pads used in residential post & beam construction.  
 Available in:

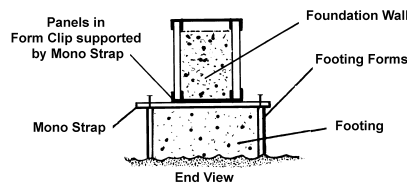
- 18" x 18" x 8"
- 24" x 24" x 8"
- 24" x 24" x 12"

## Stake Puller



Pull round, square or flat stakes without adjustments. Our puller has easy-to-use three position base and three position handle.

## Monolithic Strap



Stocked in sizes: 15", 17", 19" & 23"

For single-pour, inverted "T" foundations.



## Round Stakes

3/4" Round	
Std. Length	Weight
12"	1.5#
18"	2.2#
24"	2.9#
30"	3.6#
36"	4.3#
42"	5.0#
48"	5.7#



10 stakes per bundle

7/8" Round	
Std. Length	Weight
12"	2.6#
18"	3.9#
24"	5.2#
30"	6.5#
36"	7.8#
42"	9.1#
48"	10.4#